



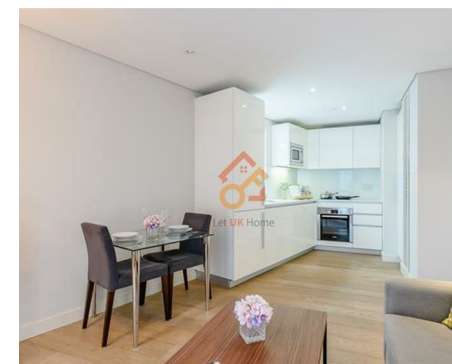
萊英家
Let UK Home

1 Bedrooms

Flat

Located in London

£3,033 Per Month



info@letukhome.co.uk

<https://www.letukhome.co.uk/>

02045348146



4B Merchant Square London

W2 1AN



A beautifully designed one bedroom luxury apartment situated on the seventh floor of this prestigious building, which features a concierge, lift service and secure underground parking.

The stunning apartment comprises spacious living and entertaining space with a beautiful reception room, a superb modern fitted open plan kitchen, one bedroom, one bathroom and ample storage space.

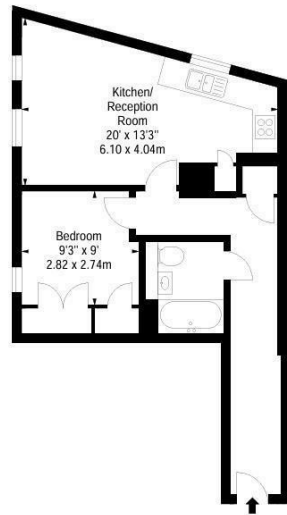
The apartment offers easy access to superb transport links such as Paddington Train Station (Elizabeth Line, Bakerloo, Hammersmith & City, Circle, District lines and Heathrow Express) Edgware Road (Circle, District and Bakerloo lines).

4B Merchant Square London

£3,033 Per Month

- 7th Floor
- Private underground parking spaces
- On-site building manager
- Flexible rental terms
- Lifts
- Dealing direct with Landlord
- Available furnished or unfurnished
- Concierge
- Video Entry
- CCTV





Seventh Floor	Approx Gross Internal Area* 501 Sq Ft - 46.54 Sq M
* As Defined by RICS - Code of Measuring Practice Illustration For Identification Purposes Only. Not to Scale All Calculations include Any/All Areas Under 1.5m Head Height.	



萊英家
Let **UK** Home

6/F Two Kingdom Street
London
W2 6BD

02045348146

info@letukhome.co.uk

Council Tax Band: D

Local Authority:

Agents Note: Whilst every care has been taken to prepare these particulars, they are for guidance purposes only. All measurements are approximate and are for general guidance purposes only and whilst every care has been taken to ensure their accuracy, they should not be relied upon and potential buyers/tenants are advised to recheck the measurements.

Energy Efficiency Rating		
	Current	Potential
Very energy efficient - lower running costs		
(92 plus) A		
(81-91) B		
(69-80) C	82	82
(55-68) D		
(39-54) E		
(21-38) F		
(1-20) G		
Not energy efficient - higher running costs		
England & Wales		EU Directive 2002/91/EC

<https://www.letukhome.co.uk/>